

MORGAN CREEK-EXOS RISK-MANAGED BITCOIN FUND

MORGAN CREEK
CAPITAL MANAGEMENT

exos

INVESTMENT OPPORTUNITY

(Please see last page for important disclosures)

Bitcoin has laid the foundation for a potential new asset class ... BUT many have yet to invest because it is perceived as:



- New and unproven
- Volatile
- Highly technical

The Morgan Creek-Exos Risk-Managed Bitcoin Fund is designed to address these issues:



- Provides exposure to Bitcoin
- Seeks to reduce volatility of returns by employing quantitative risk management techniques
- Handles technical details around trade, transfer, and custody of Bitcoin

FUND OBJECTIVES AND STRATEGY

INVESTMENT STRATEGY

We designed the RM Bitcoin strategy for those investors that can see the potential innovative disruption capability of Bitcoin but are worried about the volatility and downside. It seeks to produce higher *risk-adjusted returns* by using quantitative risk management techniques to manage downside risk.



In nature, simple organisms often prove more robust over a wider range of environments than complex ones. Our approach to trading strategies draws from the same concept. We favor simple strategies that perform well over a range of environments and rely heavily on our systematic development process to ensure that correlations are robust.

The strategy is fully exposed to Bitcoin (beta) when several risk-reward metrics (alphas) suggest a future rise in price. Conversely, exposure is reduced when its indicators suggest a future fall in price. Exos has developed alphas which we believe enable us to mitigate losses during downturns without sacrificing too much of the upside potential of Bitcoin. This paradigm - data in, trading decision out - is the cornerstone of our research process.

STRATEGY DEVELOPMENT



Extensive data exploration allows us to highlight potential market inefficiencies and generate trading signals (alphas) that can be blended together into a more complex trading strategy. Trade ideas generally originate from intuitions that are supported by quantifiable observations in the data.

INVESTMENT TEAM



Stefano Derasmo
Head Trader



Anthony Zeng
Head of Research



Dewey Tucker
Head of Quant Strategies

- Deep understanding of cryptocurrency and blockchain with extensive experience in mining and trading.
- Extensive experience in quantitative research, trading, and risk management.
- Diverse range of technical backgrounds including finance, engineering, and computer science.

FUND TERMS

Fund Name	Morgan Creek-Exos Risk Managed Bitcoin Fund
Management Fee	1%
Incentive Fee	20% above Bitcoin return
Liquidity	Monthly with 30 days notice
Domicile	Delaware LP
Administrator	MG Stover
U.S. Counsel	Thompson Hine LLP
Auditors	KPMG

For Qualified Purchasers Only

MORGAN CREEK-EXOS RISK-MANAGED
BITCOIN FUND

MORGAN CREEK
CAPITAL MANAGEMENT

exos

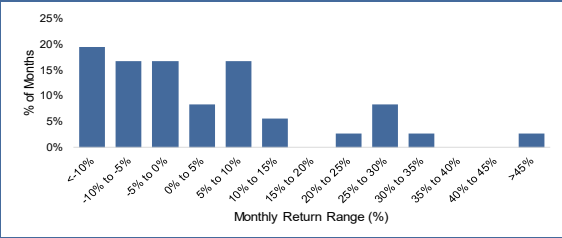
FUND PERFORMANCE STATISTICS

MONTHLY PERFORMANCE													
	Jan	Feb	Mar	Apr	May	Jun	Jul	Aug	Sep	Oct	Nov	Dec	YTD
2020											27.61%	46.13%	86.47%
2021	10.18%	29.42%	1.43%	-3.47%	-10.50%	-16.07%	6.66%	5.70%	-2.19%	21.79%	-10.13%	-0.14%	26.40%
2022	-7.18%	7.81%	5.30%	-10.74%	-6.46%	-12.41%	1.01%	-9.63%	-0.51%	5.02%	-18.86%	-8.02%	-45.16%
2023	33.78%	-6.50%	-0.79%	2.50%	-8.26%	13.78%	-4.56%	-11.90%	5.51%	26.98%			49.57%

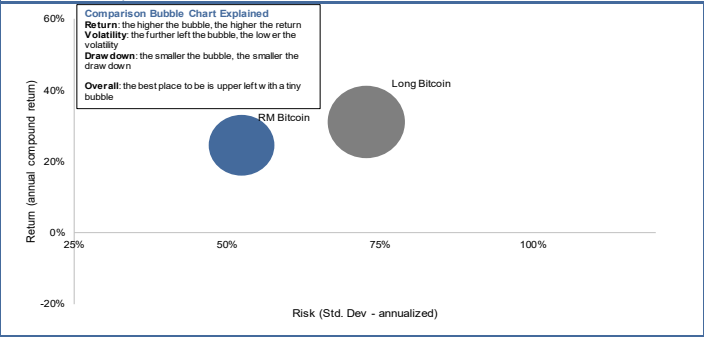
Statistics	RM Bitcoin	Long Bitcoin
Cumulative Return (since inception)	93.34%	125.69%
Annualized Compound Return	24.58%	31.17%
Sharpe Ratio	0.42	0.39
Sortino Ratio	0.94	0.71
Avg. Monthly Gain	14.74%	20.09%
Avg. Monthly Loss	-7.81%	-13.16%
Max. Drawdown	-52.07%	-73.06%
Annualized Std. Deviation	52.28%	72.65%
Downside Deviation	23.36%	40.26%
Correlation		0.85

Investment Date	BTC Entry Price	BTC Cumulative Return ¹	Cumulative Return Relative to BTC ¹
Nov-20	15,318	125.69%	-32.34%
Dec-20	19,706	75.44%	-23.92%
Jan-21	28,985	19.27%	-15.59%
Feb-21	33,139	4.32%	-10.22%
Mar-21	45,240	-23.58%	-3.71%
Apr-21	58,788	-41.19%	12.88%
May-21	57,799	-40.19%	14.45%
Jun-21	35,690	-3.13%	-13.88%
Jul-21	35,046	-1.36%	0.22%
Aug-21	41,475	-16.65%	9.34%
Sep-21	47,131	-26.65%	14.35%
Oct-21	43,800	-21.07%	10.73%
Nov-21	61,355	-43.65%	17.27%
Dec-21	56,974	-39.32%	21.24%
Jan-22	46,207	-25.18%	7.21%
Feb-22	38,500	-10.20%	-1.42%
Mar-22	43,195	-19.96%	1.94%
Apr-22	45,527	-24.06%	1.92%
May-22	37,653	-8.18%	-4.59%
Jun-22	31,777	8.79%	-15.55%
Jul-22	19,924	73.52%	-67.06%
Aug-22	23,319	48.25%	-42.86%
Sep-22	20,051	72.42%	-55.78%
Oct-22	19,425	77.97%	-60.75%
Nov-22	20,492	68.70%	-57.08%
Dec-22	17,166	101.39%	-63.81%
Jan-23	16,527	109.18%	-59.61%
Feb-23	23,132	49.45%	-37.65%
Mar-23	23,133	49.44%	-29.87%
Apr-23	28,478	21.40%	-0.86%
May-23	29,233	18.26%	-0.67%
Jun-23	26,863	28.70%	-0.51%
Jul-23	30,614	12.92%	-0.27%
Aug-23	29,263	18.14%	-0.11%
Sep-23	25,625	34.91%	-0.93%
Oct-23	27,110	27.52%	-0.54%

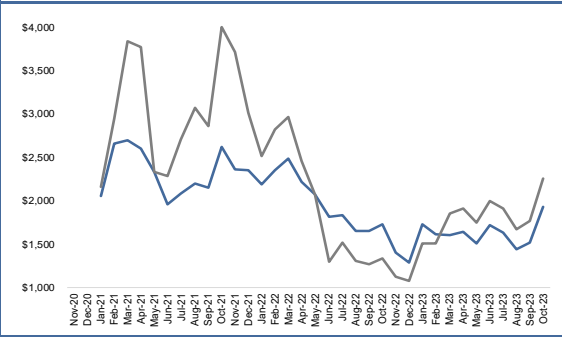
RM Bitcoin Monthly Performance Distribution



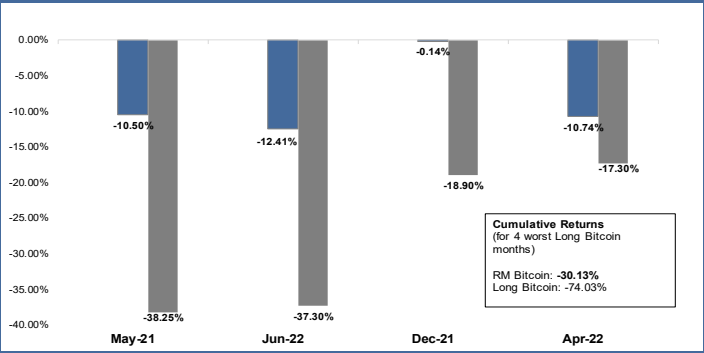
Risk-Return Comparison



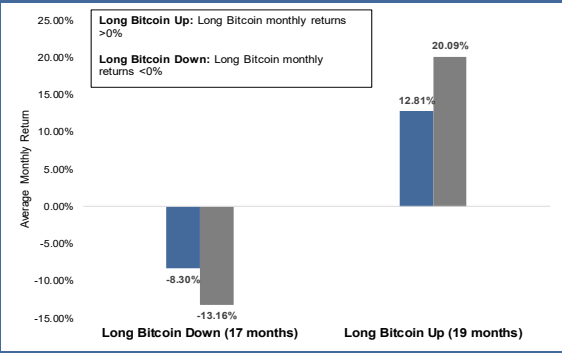
Growth of \$1,000



"4 Worst" Chart (4 worst months of Long Bitcoin)



Average Monthly Up/Down Magnitude



RM Bitcoin Long Bitcoin

Risk Managed Bitcoin returns are presented net of fees. Past performance is not indicative of future performance. Sharpe Ratio is the difference between the returns of the investment and the risk-free return, divided by the standard deviation of the investment. Risk free rate assumed to be the trailing 3-year average 10-year Treasury yield.

(1) The cumulative return from investing at the start of each month and holding until the last month end.

MORGAN CREEK-EXOS RISK-MANAGED BITCOIN FUND

IMPORTANT DISCLOSURES



DISCLOSURES

Fund

All terms are subject to the offering documents of Morgan Creek - Exos Risk-Managed Bitcoin Fund, LP (the "Fund" or the "Partnership"). There is no guarantee that any targets or projections contained herein will be met, and the contents of this material should not be unduly relied upon. Allocations are subject to change at the discretion of the manager in accordance with the fund offering documents. This material is not meant to be, nor shall it be construed as, an attempt to define all terms and conditions of any transaction or to contain all information that is or may be material to an investor. Morgan Creek Capital Management, LLC is not soliciting any action based upon this material, and this material is not meant to be, nor shall it be construed as, an offer or solicitation of an offer for the purchase or sale of any security or advisory or other service. If in the future any security or service is offered or sold, such offer or sale shall occur only pursuant to, and a decision to invest therein should be made solely on the basis of a definitive disclosure document and shall be made exclusively to qualified purchasers in a private offering exempt from registration under all applicable securities and other laws. Any such disclosure document shall contain material information not contained herein, and shall supplement, amend, and/or supersede in its entirety the information referred to herein. Nothing contained in this material is, or should be, relied upon as a representation as to past or future performance, and no assurance, promise, or representation can be made as to actual returns.

General

Past performance is not indicative of future results. Morgan Creek Capital Management, LLC does not warrant the accuracy, adequacy, completeness, timeliness or availability of any information provided by non-Morgan Creek sources. There can be no assurance that the investment objectives of Morgan Creek-Exos Risk Managed Bitcoin Fund will be achieved. This is neither an offer to sell nor a solicitation of an offer to buy interests in any investment fund managed by Morgan Creek Capital Management, LLC or its affiliates, nor shall there be any sale of securities in any state or jurisdiction in which such offer or solicitation or sale would be unlawful prior to registration or qualification under the laws of such state or jurisdiction. Any such offering can be made only at the time a qualified offeree receives a Confidential Private Offering Memorandum and other operative documents which contain significant details with respect to risks and should be carefully read. Neither the Securities and Exchange Commission nor any State securities administrator has passed on or endorsed the merits of any such offerings of these securities, nor is it intended that they will. This document is for informational purposes only.

Performance Disclosures

There can be no assurance that the investment objectives of any fund managed by Morgan Creek Capital Management, LLC will be achieved.

Forward-Looking Statements

This presentation contains certain statements that may include "forward-looking statements" within the meaning of Section 27A of the Securities Act of 1933 and Section 21E of the Securities Exchange Act of 1934. "Forward-looking statements" are, among other things, statements about our future outlook on opportunities based upon current market conditions. Although the company believes that the expectations reflected in these forward-looking statements are reasonable, they do reflect assumptions, risks and uncertainties, and these expectations may prove to be incorrect. Actual results could differ materially from those anticipated in these forward-looking statements as a result of a variety of factors. One should not place undue reliance on these forward-looking statements, which speak only as of the date of this discussion. Other than as required by law, the company does not assume a duty to update these forward-looking statements. Past performance is no guarantee of future results. The information is not intended to predict the performance of any specific investment or security.

Risk Summary

An investment in the Partnership involves significant risk factors and is suitable only for persons who can bear the economic risk of the loss of their entire investment, who have a limited need for liquidity in their investment, and who meet the conditions set forth in the Fund's Offering Memorandum. There can be no assurances that the Fund will achieve its investment objective. An investment in the Partnership carries with it the inherent risks associated with investments in Bitcoin and futures contracts based on Bitcoin. Investment objectives are not projections of expected performance or guarantees of anticipated investment results. Actual performance and results may vary substantially from the stated objectives with respect to risks. Investments are speculative and are meant for sophisticated investors only. An investor may lose all or a substantial part of its investment in funds managed by Morgan Creek Capital Management, LLC. There are also substantial restrictions on transfers. This is a brief summary of investment risks. Prospective investors should carefully review the risk disclosures contained in the Fund's Confidential Private Offering Memoranda.

Bitcoin Risks

Digital Assets such as Bitcoin were introduced within the past decade and, as a result, the medium to long-term value of Bitcoin is uncertain. Its value could ultimately be subject to a number of factors relating to the capabilities and development of blockchain technologies, which are also uncertain. Additional risks of investing in Bitcoin are included in the Confidential Private Offering Memorandum.

Concentration Risks

The allocation of the Fund's capital to only one asset – Bitcoin – could increase the risk of investing in the Fund due to a lack of diversification in the portfolio.